

PRODUCT MONOGRAPH
INCLUDING PATIENT MEDICATION INFORMATION

Pr **TEPMETKO**[®]

Tepotinib tablets

tablets, 225 mg tepotinib (as tepotinib hydrochloride), oral

Other Protein Kinase Inhibitors (L01EX21)

EMD Serono, a Division of EMD Inc., Canada
2695 North Sheridan Way, Suite 200
Mississauga, ON L5K 2N6

Date of Initial Authorization:
MAY 27, 2021

Date of Revision:
MAR 4, 2024

Submission Control No: 274967

TEPMETKO is a trademark of Merck KGaA, Darmstadt, Germany or its affiliates.
EMD Serono is the Canadian healthcare business of Merck KGaA, Darmstadt, Germany
www.emdserono.ca

RECENT MAJOR LABEL CHANGES

1 Indications	03/2024
---------------	---------

TABLE OF CONTENTS

RECENT MAJOR LABEL CHANGES	2
TABLE OF CONTENTS	2
PART I: HEALTH PROFESSIONAL INFORMATION	4
1 INDICATIONS	4
1.1 Pediatrics	4
1.2 Geriatrics	4
2 CONTRAINDICATIONS	4
3 SERIOUS WARNINGS AND PRECAUTIONS BOX	4
4 DOSAGE AND ADMINISTRATION	5
4.2 Recommended Dose and Dosage Adjustment	5
4.4 Administration	7
4.5 Missed Dose	7
5 OVERDOSAGE	7
6 DOSAGE FORMS, STRENGTHS, COMPOSITION AND PACKAGING	7
7 WARNINGS AND PRECAUTIONS	7
7.1 Special Populations	10
7.1.1 Pregnant Women	10
7.1.2 Breast-feeding	10
7.1.3 Pediatrics	10
7.1.4 Geriatrics	10
8 ADVERSE REACTIONS	10
8.1 Adverse Reaction Overview	10
8.2 Clinical Trial Adverse Reactions	11
9 DRUG INTERACTIONS	16
9.4 Drug-Drug Interactions	16
9.5 Drug-Food Interactions	17
10 ACTION AND CLINICAL PHARMACOLOGY	17
10.1 Mechanism of Action	17
10.2 Pharmacodynamics	17
10.3 Pharmacokinetics	17
11 STORAGE, STABILITY AND DISPOSAL	19
PART II: SCIENTIFIC INFORMATION	20
13 PHARMACEUTICAL INFORMATION	20
14 CLINICAL TRIALS	21
14.1 Trial Design and Study Demographics	21
14.2 Study Results	22
16 NON-CLINICAL TOXICOLOGY	24

PART I: HEALTH PROFESSIONAL INFORMATION

1 INDICATIONS

TEPMETKO (tepotinib) is indicated for the treatment of adult patients with locally advanced unresectable or metastatic non-small cell lung cancer (NSCLC) harbouring mesenchymal-epithelial transition (*MET*) tyrosine kinase receptor exon 14 skipping alterations.

Documentation of *MET* tyrosine kinase receptor exon 14 (*MET*ex14) skipping alteration status based on a validated *MET*ex14 assay is required prior to treatment with TEPMETKO (see WARNINGS AND PRECAUTIONS).

Efficacy in patients with NSCLC harbouring *MET*ex14 skipping alterations was based on objective response rate and duration of response in a single-arm study (see CLINICAL TRIALS).

1.1 Pediatrics

Pediatrics (< 18 years of age): No data are available to Health Canada; therefore, Health Canada has not authorized an indication for pediatric use.

1.2 Geriatrics

Geriatrics (> 65 years of age): Of 313 patients with advanced NSCLC with *MET*ex14 skipping alterations in the VISION study who received 450 mg TEPMETKO once daily, 79% were 65 years or older, 41% were 75 years or older, and 8% were 85 years or older. No clinically important differences in safety or efficacy were observed between patients aged 65 years or older and younger patients.

2 CONTRAINDICATIONS

TEPMETKO is contraindicated in patients who are hypersensitive to this drug or to any ingredient in the formulation, including any non-medicinal ingredient, or component of the container. For a complete listing, see Dosage Forms, Strengths, Composition and Packaging.

3 SERIOUS WARNINGS AND PRECAUTIONS BOX

- Hepatotoxicity (see DOSAGE AND ADMINISTRATION, Hepatic Impairment and WARNINGS AND PRECAUTIONS).
- Interstitial lung disease (ILD) / Pneumonitis (see WARNINGS AND PRECAUTIONS).
- Embryo-fetal toxicity (see WARNINGS AND PRECAUTIONS).

Treatment with TEPMETKO (tepotinib) should be initiated and supervised by a qualified physician experienced in the use of anticancer therapies (see INDICATIONS).

4 DOSAGE AND ADMINISTRATION

4.2 Recommended Dose and Dosage Adjustment

The recommended dose of TEPMETKO is 450 mg (as tepotinib hydrochloride) once daily with food (two tablets). Treatment should continue until disease progression or unacceptable toxicity.

Dose Modification

The recommended dose reduction of TEPMETKO for the management of adverse reactions is 225 mg orally once daily.

Permanent discontinuation of TEPMETKO is recommended in patients who are unable to tolerate 225 mg orally once daily.

The recommended dosage modifications of TEPMETKO for adverse reactions are provided in Table 1.

Table 1 Recommended TEPMETKO Dosage Modifications for Adverse Reactions

Adverse Reaction	Severity	Dose Modification
Interstitial Lung Disease (ILD) / Pneumonitis (see WARNINGS AND PRECAUTIONS)	Any grade	Withhold TEPMETKO if ILD is suspected. Permanently discontinue TEPMETKO if ILD is confirmed.

Adverse Reaction	Severity	Dose Modification
Increased alanine aminotransferase (ALT) and/or aspartate aminotransferase (AST) without increased total bilirubin (see WARNINGS AND PRECAUTIONS)	Grade 3	Withhold TEPMETKO until recovery to baseline ALT/AST. If recovered to baseline within 7 days, then resume TEPMETKO at the same dose; otherwise resume TEPMETKO at a reduced dose.
	Grade 4	Permanently discontinue TEPMETKO.
Increased ALT and/or AST with increased total bilirubin in the absence of cholestasis or hemolysis (see WARNINGS AND PRECAUTIONS)	ALT and/or AST greater than 3 times the upper limit of normal (ULN) with total bilirubin greater than 2 times ULN	Permanently discontinue TEPMETKO.
Other adverse reactions (see ADVERSE REACTIONS)	Grade 2	Maintain dose level. If intolerable, consider withholding TEPMETKO until resolved, then resume TEPMETKO at a reduced dose.
	Grade 3	Withhold TEPMETKO until resolved, then resume TEPMETKO at a reduced dose.
	Grade 4	Permanently discontinue TEPMETKO.

Geriatrics (> 65 years of age): No dose adjustment is necessary in patients aged 65 years and above (see ACTION AND CLINICAL PHARMACOLOGY, Pharmacokinetics, Special Populations and Conditions).

Hepatic Impairment: No dose adjustment is recommended in patients with mild (Child Pugh A) or moderate (Child Pugh B) hepatic impairment. The pharmacokinetics and safety of TEPMETKO in patients with severe hepatic impairment (Child Pugh C) have not been studied (see WARNINGS AND PRECAUTIONS, Hepatic and ACTION AND CLINICAL PHARMACOLOGY, Pharmacokinetics, Special Populations and Conditions).

Renal Impairment: No dose adjustment is recommended in patients with mild or moderate renal impairment (creatinine clearance 30 to 89 mL/min). The pharmacokinetics and safety of TEPMETKO in patients with severe renal impairment (creatinine clearance below 30 mL/min) have not been studied (see WARNINGS AND PRECAUTIONS, Monitoring and Laboratory Tests and ACTION AND CLINICAL PHARMACOLOGY, Pharmacokinetics, Special Populations and Conditions).

4.4 Administration

TEPMETKO is for oral use. Tablets should be taken once daily with food, at approximately the same time each day. Tablets should be swallowed whole. Tablets should not be chewed, crushed, or split.

4.5 Missed Dose

If a daily dose of TEPMETKO is missed, it should be taken with food as soon as remembered on the same day, unless the next dose is due within 8 hours.

If vomiting occurs after taking a dose of TEPMETKO, patients should be advised to take the next dose at the scheduled time.

5 OVERDOSAGE

TEPMETKO has been investigated at doses up to 1,261 mg. Symptoms of overdose have not been identified. There is no specific treatment in the event of TEPMETKO overdose. In case of overdose, TEPMETKO should be withheld and symptomatic treatment initiated.

For management of a suspected drug overdose, contact your regional poison control centre.

6 DOSAGE FORMS, STRENGTHS, COMPOSITION AND PACKAGING

Table 2 Dosage Forms, Strengths, Composition and Packaging

Route of Administration	Dosage Form / Strength/Composition	Non-medicinal Ingredients
oral	tablets / 225 mg tepotinib (as tepotinib hydrochloride)	Colloidal silicon dioxide, crospovidone, hypromellose, lactose monohydrate, magnesium stearate, mannitol, microcrystalline cellulose, polyethylene glycol, red iron oxides (E172), titanium dioxide, triacetin.

TEPMETKO is a white-pink, oval, biconvex film-coated tablet with embossment "M" on one side and plain on the other side.

TEPMETKO is supplied in a transparent blister which consists of a multilayer composite form foil and an aluminum lidding foil containing 60 tablets (6 blister cards of 10 tablets).

7 WARNINGS AND PRECAUTIONS

Please see the Serious Warnings and Precautions Box at the beginning of Part 1: Health Professional Information.

General

Patient selection for *MET*ex14 skipping alterations

Patients treated with TEPMETKO must have a documented *MET*ex14 skipping alteration based on a validated *MET*ex14 plasma and/or tissue assay. Assessment for the presence of *MET*ex14 skipping alterations should be performed by laboratories with demonstrated proficiency in the specific technology being utilized (see CLINICAL TRIALS).

Driving and Operating Machinery

No studies on the effects of TEPMETKO on the ability to drive or use machines have been performed. Caution should be exercised when operating a vehicle or potentially dangerous machinery until the patient is reasonably certain that TEPMETKO does not affect them adversely.

Hepatic

Hepatotoxicity

Hepatotoxicity occurred in patients with advanced NSCLC with *MET*ex14 skipping alterations who received TEPMETKO monotherapy at the recommended dosage regimen (n=313) (see ADVERSE REACTIONS). Adverse reactions of increase in alanine aminotransferase (ALT) and/or increase in aspartate aminotransferase (AST) (ALT/AST) were reported in 19.8% of patients treated with TEPMETKO. Grade \geq 3 adverse reactions were reported in 3.8%. A case of life-threatening hepatic failure occurred in one patient (0.3%) treated with TEPMETKO. Ten patients (3.2%) temporarily discontinued TEPMETKO and 2 patients (0.6%) had dose reductions due to increase in ALT/AST. The median time to first onset of Grade \geq 3 adverse reactions was 9.9 weeks (range 3.1 to 37.4 weeks).

Liver function tests (ALT and AST, and total bilirubin) should be monitored prior to the start of TEPMETKO, every 2 weeks during the first 3 months of treatment, then once a month or as clinically indicated, with more frequent testing in patients who develop increased transaminases or bilirubin. Based on the severity of the adverse reaction, TEPMETKO should be withheld, dose reduced, or permanently discontinued. See DOSAGE AND ADMINISTRATION, Dose Modification.

Monitoring and Laboratory Tests

Interpretation of laboratory tests

Increase in creatinine

In patients with advanced NSCLC with *MET*ex14 skipping alterations who received TEPMETKO monotherapy at the recommended dosage regimen (n=313), a median increase in serum creatinine of 30% was computed 21 days after initiation of treatment with TEPMETKO (see ADVERSE REACTIONS).

In vitro studies suggest that tepotinib or its main metabolite inhibit the renal tubular transporter proteins organic cation transporter (OCT) 2 and multidrug and toxin extrusion (MATE) 2 at clinically relevant concentrations (see DRUG INTERACTIONS, Drug-Drug Interactions). As

creatinine is a substrate of these transporters, one component of the observed increases in serum creatinine may be the inhibition of active tubular secretion.

Renal function estimates that rely on serum creatinine [creatinine clearance or estimated glomerular filtration rate (GFR)] should be interpreted with caution considering this effect. If persistent elevations in serum creatinine are observed, a comprehensive evaluation of the patient's clinical status should be performed, and alternative markers of renal function should be considered in line with local clinical practice.

Respiratory

Interstitial lung disease (ILD) / Pneumonitis

Interstitial lung disease (ILD) / pneumonitis adverse reactions have been reported in 8 patients (2.6%) with advanced NSCLC with *MET*ex14 skipping alterations who received TEPMETKO monotherapy at the recommended dosage regimen (n=313). Four of 8 patients had serious adverse reactions. One of 8 patients had an adverse reaction which was Grade \geq 3, serious, and resulted in death. Five patients (1.6%) permanently discontinued TEPMETKO due to ILD / pneumonitis. (See ADVERSE REACTIONS).

Patients should be monitored for acute onset or unexplained worsening of pulmonary symptoms indicative for ILD / pneumonitis (e.g., dyspnea, cough, fever). TEPMETKO should be immediately withheld in patients with suspected ILD / pneumonitis. If no other potential causes of ILD / pneumonitis are identified, TEPMETKO must be permanently discontinued and the patient should be treated appropriately.

Sexual Health

Reproduction

TEPMETKO can cause fetal harm when administered to a pregnant woman (see Special Populations). Women of childbearing potential or male patients with female partners of childbearing potential should be advised of the potential risk to a fetus.

Pregnancy testing

Pregnancy testing is recommended in women of childbearing potential prior to initiating treatment with TEPMETKO.

Contraception in females and males

Women of childbearing potential should use effective contraception during TEPMETKO treatment and for 1 week after the final dose.

Male patients with female partners of childbearing potential should use barrier contraception during TEPMETKO treatment and for 1 week after the final dose.

Fertility

No clinical data on the effect of TEPMETKO on fertility are available. See NON-CLINICAL TOXICOLOGY.

7.1 Special Populations

7.1.1 Pregnant Women

There are no clinical data on the use of TEPMETKO in pregnant women or on the transmission of TEPMETKO through the seminal fluid of male patients to their female partners of childbearing potential. Oral administration of tepotinib to pregnant rabbits during the period of organogenesis resulted in skeletal malformations (teratogenicity) and anomalies at exposures approximately 0.003 times the human exposure based on area under the curve (AUC) at the 450 mg daily clinical dose (see NON-CLINICAL TOXICOLOGY). Based on its mechanism of action (see ACTION AND CLINICAL PHARMACOLOGY) and findings in animal studies, TEPMETKO can cause fetal harm when administered to a pregnant woman.

TEPMETKO should not be used during pregnancy, unless clearly necessary and after a careful consideration of the need of the mother and the risk to the fetus. Women of childbearing potential or male patients with female partners of childbearing potential should be advised of the potential risk to a fetus and on the use of effective contraception (see WARNINGS AND PRECAUTIONS, Sexual Health, Reproduction).

7.1.2 Breast-feeding

There are no data regarding the secretion of tepotinib or its metabolites in human milk or its effects on the breast-fed infant or milk production. Breast-feeding should be discontinued during treatment with TEPMETKO and for one week after the final dose.

7.1.3 Pediatrics

Pediatrics (<18 years of age): The safety and efficacy of TEPMETKO in pediatric patients have not been established.

7.1.4 Geriatrics

Geriatrics (> 65 years of age): Of 313 patients with advanced NSCLC with *MET*ex14 skipping alterations in the VISION study who received 450 mg TEPMETKO once daily, 79% were 65 years or older, 41% were 75 years or older, and 8% were 85 years or older. No clinically important differences in safety or efficacy were observed between patients aged 65 years or older and younger patients.

8 ADVERSE REACTIONS

8.1 Adverse Reaction Overview

The pooled safety population reflects exposure to TEPMETKO in 506 patients with various solid tumours enrolled in five open-label, single-arm studies, in which patients received TEPMETKO monotherapy at a dose of 450 mg once daily. This includes 313 patients with advanced NSCLC harbouring *MET*ex14 skipping alterations included in the pivotal clinical study (VISION). In the pooled safety population, the median duration of exposure was 23.7 weeks (range 0 to 312 weeks), with 44% exposed for 6 months or longer, and 22% exposed for greater than one year. In the VISION study, the median duration of exposure was 32.4 weeks (range 0 to 312 weeks), with 60% exposed for 6 months or longer and 32% exposed for greater than one year.

In the VISION study, a treatment-emergent adverse event (TEAE) was reported by 99% of patients who received TEPMETKO in the target indication. The most common ($\geq 20\%$) TEAEs

were edema, mainly peripheral edema (72.5% of patients); hypoalbuminemia; nausea, increase in creatinine; diarrhea; decreased appetite; and dyspnea (see Clinical Trial Adverse Reactions).

Serious TEAEs occurred in 50.8% of patients who received TEPMETKO. Serious TEAEs in $\geq 2\%$ of patients included pleural effusion (6.1%), pneumonia (5.4%), disease progression (4.2%), general health deterioration (3.8%), dyspnea (3.5%), peripheral edema (3.2%), and pulmonary embolism (2.2%).

Grade ≥ 3 TEAEs occurred in 64.9% of patients, with Grade 3, Grade 4, and Grade 5 TEAEs observed in 46.6%, 5.1%, and 13.1%, respectively. Grade ≥ 3 TEAEs were reported in $\geq 5\%$ of patients [peripheral edema (11.8%) and hypoalbuminemia (6.4%)]. Grade 4 TEAEs reported in 2 patients (0.6%) were increased amylase (0.6%), and decreased neutrophil count (0.6%). A fatal adverse reaction occurred in one patient (0.3%) due to interstitial lung disease. A case of fatal dyspnea from possible fluid overload occurred in one patient (0.3%).

The most common Grade 3 to 4 laboratory abnormalities ($\geq 2\%$) were increased lipase (3.5%), increased alanine aminotransferase (3.2%), increased amylase (3.2%), and increased gamma-glutamyltransferase (2.2%).

Permanent treatment discontinuation due to a TEAE occurred in 24.9% of patients who received TEPMETKO in VISION. The most frequent TEAEs ($\geq 1\%$) leading to permanent discontinuations of TEPMETKO were peripheral edema (5.4%), pleural effusion (1.6%), general health deterioration (1.6%), disease progression (1.3%), edema (1.3%), pneumonitis (1.0%), interstitial lung disease (1.0%), pneumonia (1.0%), and genital edema (1.0%).

Temporary treatment discontinuations due to a TEAE occurred in 52.7% of patients who received TEPMETKO in VISION. The maximum permitted period of continuous treatment interruption was 21 days. Treatment-emergent adverse events requiring temporary discontinuations of TEPMETKO in $\geq 2\%$ of patients were peripheral edema (19.8%), blood creatinine increased (5.8%), generalized edema (4.8%), edema (3.8%), pleural effusion (3.5%), nausea (3.2%), ALT increased (2.9%), pneumonia (2.6%), localized edema (2.2%), dyspnea (2.2%), and decreased appetite (2.2%).

Dose reductions due to a TEAE occurred in 36.1% of patients who received TEPMETKO in VISION. Treatment-emergent adverse events requiring dose reductions in $\geq 2\%$ of patients who received TEPMETKO were peripheral edema (15.7%), generalized edema (3.2%), blood creatinine increased (2.9%), edema (2.6%), and pleural effusion (2.2%).

8.2 Clinical Trial Adverse Reactions

Because clinical trials are conducted under very specific conditions, the adverse reaction rates observed in the clinical trials may not reflect the rates observed in practice and should not be compared to the rates in the clinical trials of another drug. Adverse reaction information from clinical trials is useful for identifying drug-related adverse events and for approximating rates.

The safety of TEPMETKO was evaluated in 313 adult patients with locally advanced (stage IIIb) or metastatic (stage IV) NSCLC harbouring *MET*_{ex14} skipping alterations who received at least one dose of TEPMETKO in the single-arm, open-label Phase II VISION study. TEPMETKO was administered as monotherapy at a dose of 450 mg once daily. In the VISION study, the median duration of exposure was 32.4 weeks (range 0 to 312 weeks). The median age was 72 years

(range: 41 to 94 years), with 79% of patients \geq 65 years of age. Patients with active brain metastases, clinically significant uncontrolled cardiac disease, severe hepatic impairment, and severe renal impairment were excluded from the study.

Table 3 summarizes the incidence of adverse reactions that occurred in \geq 1% of patients with advanced NSCLC harbouring *MET*_{ex14} skipping alterations.

Table 3 Adverse Reactions in ≥ 1% Patients with Advanced NSCLC Harboring *MET*ex14 Skipping Alterations in the VISION Study

System organ class (SOC)/Adverse reaction	TEPMETKO N=313	
	All grades n (%)	Grade ≥ 3 n (%)
Gastrointestinal disorders		
Nausea	97 (31)	4 (1.3)
Diarrhea	90 (29)	2 (0.6)
Constipation	60 (19)	1 (0.3)
Abdominal pain ^a	58 (18)	2 (0.6)
Vomiting ^b	46 (15)	3 (1.0)
General disorders and administration site conditions		
Edema ^c	251 (80)	43 (14)
Fatigue ^d	93 (30)	6 (1.9)
Pyrexia	32 (10)	0 (0.0)
Generalized edema	21 (7)	8 (2.6)
Hepatobiliary disorders		
Increase in alanine aminotransferase (ALT)	57 (18)	10 (3.2)
Increase in aspartate aminotransferase (AST)	43 (14)	6 (1.9)
Increase in alkaline phosphatase (ALP)	35 (11)	1 (0.3)
Infections and Infestations		
Pneumonia ^e	38 (12)	16 (5)
Investigations		
Increase in creatinine ^f	95 (30)	4 (1.3)
Increase in amylase ^g	36 (11)	10 (3.2)
Increase in lipase	29 (9)	11 (3.5)
Metabolism and nutrition disorders		
Hypoalbuminemia ^h	106 (34)	20 (6)
Decreased appetite	67 (21)	6 (1.9)
Musculoskeletal and Connective Tissue disorders		
Musculoskeletal pain ⁱ	95 (30)	10 (3.2)
Nervous system disorders		
Dizziness	22 (7)	1 (0.3)
Headache	18 (6)	1 (0.3)

Renal and urinary disorders		
Acute kidney injury	9 (2.9)	3 (1.0)
Respiratory, thoracic and mediastinal disorders		
Dyspnea ^j	75 (24)	8 (2.6)
Cough ^k	55 (18)	1 (0.3)
Pleural effusion	45 (14)	13 (4.2)
Interstitial Lung Disease (ILD) / Pneumonitis	8 (2.6)	1 (0.3)
Skin and subcutaneous tissue disorders		
Rash	31 (10)	1 (0.3)
Pruritus	26 (8)	0 (0.0)
Rash maculo-papular	14 (4.5)	2 (0.6)

^a includes abdominal discomfort, abdominal pain, abdominal pain lower, abdominal pain upper, gastrointestinal pain

^b includes terms retching, vomiting

^c includes terms edema peripheral, edema, edema genital, face edema, localized edema, eye edema, periorbital edema, peripheral swelling, scrotal edema

^d includes term asthenia, fatigue

^e includes terms pneumonia, pneumonia aspiration, pneumonia bacterial

^f includes terms blood creatinine increased, hypercreatininemia

^g includes amylase increased, hyperamylasemia

^h includes terms hypoalbuminemia, blood albumin decreased

ⁱ includes arthralgia, arthritis, back pain, bone pain, musculoskeletal chest pain, musculoskeletal pain, myalgia, non-cardiac chest pain, pain in extremity, and spinal pain

^j includes dyspnea, dyspnea at rest, dyspnea exertional

^k includes cough, productive cough

^l ILD as per Integrated Assessment

Table 4 provides treatment-emergent shifts from baseline in laboratory findings occurring in patients treated with TEPMETKO in VISION.

Table 4 Select Laboratory Abnormalities (\geq 20%) That Worsened from Baseline in Patients Who Received TEPMETKO in VISION

Laboratory Abnormalities	TEPMETKO ¹	
	Grades 1 to 4 (%)	Grades 3 to 4 (%)
Chemistry		
Decreased albumin	81	9
Increased creatinine	60	1.0
Increased alkaline phosphatase	52	1.6
Increased alanine aminotransferase	49	4.9
Increased aspartate aminotransferase	40	3.6
Decreased sodium	35	9
Increased gamma-glutamyltransferase	29	5
Increased potassium	26	1.9
Increased amylase	25	5
Increased lipase	21	5
Hematology		
Decreased lymphocytes	57	15
Decreased hemoglobin	31	3.6
Decreased leukocytes	25	1.9
Decreased platelets	24	0.6

¹ The denominator used to calculate the rate varied from 268 to 308 based on the number of patients with a baseline value and at least one post-treatment value.

A clinically relevant laboratory abnormality in < 20% of patients who received TEPMETKO was increase in lipase in 18.3% of patients, including 3.7% Grades 3 to 4.

Increase in creatinine

In VISION, a median increase in serum creatinine of 30% was computed 21 days after initiation of treatment with TEPMETKO. The increases in serum creatinine persisted throughout treatment and were reversible upon treatment discontinuation, with a median increase of 6% at the 30-day safety follow-up visit. See DRUG INTERACTIONS, Drug-Drug Interactions.

9 DRUG INTERACTIONS

9.4 Drug-Drug Interactions

Agents that may have their plasma concentrations altered by tepotinib

P-gp substrates: Tepotinib can inhibit the transport of sensitive substrates of P-gp. Monitoring of the clinical effects of P-gp substrates with a narrow therapeutic index (e.g., digoxin) is recommended during co-administration with TEPMETKO.

The drugs listed in Table 5 are based on either drug interaction studies, or are potential interactions due to the expected magnitude and seriousness of the interaction.

Table 5 Established or Potential Drug Interactions

Proper/Common Name	Source of Evidence	Effect	Clinical Comment
Drugs for which the exposure may be affected by tepotinib			
Sensitive P-gp substrates (e.g., digoxin)	CT	Inhibited transport of sensitive P-gp substrates	TEPMETKO increased the AUC and C _{max} of the sensitive P-gp substrate dabigatran etexilate by approximately 50% and 40%. Monitoring of the clinical effects of P-gp-substrates with a narrow therapeutic index is recommended during co-administration with TEPMETKO.

CT = Clinical Trial

Clinical studies

Effect of CYP3A/P-gp inducers on tepotinib: In healthy participants, co-administration of a single 450 mg tepotinib dose with the strong CYP3A inducer carbamazepine (300 mg twice daily for 14 days) decreased tepotinib AUC_{inf} by 35% and C_{max} by 11% compared to administration of tepotinib alone.

Effect of CYP3A/P-gp inhibitors on tepotinib: In healthy participants, co-administration of a single 450 mg tepotinib dose with the strong CYP3A inhibitor itraconazole (200 mg once daily for 11 days) increased tepotinib AUC_{inf} by 22% with no change in tepotinib C_{max} compared to administration of tepotinib alone.

In vitro studies

Cytochrome P450 enzymes: Tepotinib and M506 do not inhibit CYP1A2, CYP2A6, CYP2B6, CYP2C8, CYP2C9, CYP2C19, CYP2D6 and CYP2E1 or induce CYP1A2 and 2B6 at clinically relevant concentrations.

UDP-glucuronosyltransferase (UGT): Tepotinib and M506 do not inhibit UGT 1A1, 1A9, 2B17, 1A3/4/6 and 2B7/15 at clinically relevant concentrations.

Transporter systems: Tepotinib or its major circulating metabolite M506 inhibit BCRP, OCT2 and MATE2 at clinically relevant concentrations. Tepotinib does not inhibit bile salt export pump (BSEP) or organic anion transporter polypeptide (OATP)1B3, organic anion transporter (OAT)1

and 3.

9.5 Drug-Food Interactions

TEPMETKO should be taken with food (see ACTION AND CLINICAL PHARMACOLOGY, Pharmacokinetics).

10 ACTION AND CLINICAL PHARMACOLOGY

10.1 Mechanism of Action

The mesenchymal-epithelial transition factor (MET) and its ligand, the hepatocyte growth factor (HGF), are involved in carcinogenesis and tumour progression. Oncogenic activation of MET has been shown to promote cancer cell proliferation, survival, migration and invasion, and tumour angiogenesis, as well as to mediate resistance to cancer therapies.

Tepotinib is a kinase inhibitor that targets MET, including variants with exon 14 skipping alterations. Tepotinib inhibits HGF-dependent and -independent MET phosphorylation and MET-dependent downstream signaling pathways. Tepotinib also inhibited melatonin 2 and imidazoline 1 receptors at clinically achievable concentrations.

10.2 Pharmacodynamics

In vitro, tepotinib inhibited proliferation, anchorage-independent growth and migration of MET-dependent tumour cells. In mice implanted with tumour cell lines with oncogenic activation of MET, including *METex14* skipping alterations, tepotinib inhibited tumour growth, led to sustained inhibition of MET phosphorylation, and, in one model, decreased the formation of metastases. Tepotinib treatment led also to regression of established intracranial brain metastasis models from NSCLC patient-derived xenografts with oncogenic MET activation.

Cardiac electrophysiology

TEPMETKO, at the recommended dosage of 450 mg once daily, was not associated with large mean increases in QTc (i.e., > 20 ms) in patients with various solid tumors. A concentration-dependent increase in QTc interval was observed. The QTc effect of tepotinib at high clinical exposures has not been evaluated.

10.3 Pharmacokinetics

The pharmacokinetic parameters for TEPMETKO have been characterized in patients with solid tumours (Table 6). Exposure increases dose-proportionally over the clinically relevant dose range up to 450 mg

Table 6 Summary of TEPMETKO pharmacokinetic parameters in patients

	C_{max} (ng/mL)	t_{max} (h)	t_{1/2} (h)	AUC_τ (h*ng/ml)	CL_{ss}/F (L/h)	V_z/F (L)
	geoMean (geoCV%)	Median (range)	Mean	geoMean (geoCV%)	geoMean (geoCV%)	geoMean (geoCV%)
Steady state (450 mg TEPMETKO once daily)	1291 (48.1)	8 (6-12)	32	27,438 (51.7)	23.8 (87.5%)	1,038 (24.3%)

Absorption: The geomean (geoCV%) absolute bioavailability of TEPMETKO in fed state was 71.6% (10.8%) in healthy subjects. The median time to maximum concentration t_{max} of tepotinib was 8 hours (range from 6 to 12 hours).

Effect of Food: Co-administration of a single 450 mg dose of TEPMETKO with a high-calorie, high-fat meal (approximately 800 to 1,000 kcal, 150 kcal from protein, 250 kcal from carbohydrate, and 500 to 600 kcal from fat) increased the AUC of tepotinib by 1.6-fold, increased the C_{max} by 2-fold, and shifted the t_{max} from 12 hours to 8 hours.

Distribution: Protein binding of tepotinib in human plasma is 98%. The volume of distribution (V_z) of tepotinib after an intravenous tracer dose (geometric mean and geoCV%) was 574 L (14.4%).

Unbound concentrations of tepotinib in the brain tissue of rats at steady state were approximately 25% of the corresponding concentrations in plasma.

Metabolism: Tepotinib is primarily metabolized by CYP3A4 and CYP2C8 P450 enzymes. One major circulating plasma metabolite, M506, has been identified with a minor contribution to the overall efficacy of tepotinib.

Elimination: After oral administration of TEPMETKO in patients, the apparent clearance (CL/F) is 23.8 L/h, and the half-life is 32 hours.

Following oral administration of a 450 mg radiolabeled tepotinib dose, 85% of tepotinib was recovered in feces (45% unchanged) and 13.6% in urine (7% unchanged). The major circulating metabolite M506 accounted for about 3% of the total radioactivity in the feces.

Special Populations and Conditions: A population kinetic analysis did not show any effect of age (18 to 89 years), race/ethnicity, sex, or body weight (35.5 to 136 kg) on the pharmacokinetics of tepotinib.

Pediatrics: Pharmacokinetics of tepotinib have not been evaluated in children and adolescents <18 years of age.

Hepatic Impairment: No dose adjustment is recommended in patients with mild hepatic impairment (Child-Pugh Class A) or moderate hepatic impairment (Child-Pugh Class B). The pharmacokinetics and safety profile of tepotinib have not been studied in patients with severe hepatic impairment (Child Pugh Class C).

Renal Impairment: No dose adjustment is recommended in patients with mild and moderate renal impairment (creatinine clearance 30 to 89 mL/min). The pharmacokinetics and safety

profile of tepotinib have not been studied in patients with severe renal impairment (creatinine clearance less than 30 mL/min).

11 STORAGE, STABILITY AND DISPOSAL

Store at room temperature between 15 to 30°C. Store in the original package to protect from moisture.

PART II: SCIENTIFIC INFORMATION

13 PHARMACEUTICAL INFORMATION

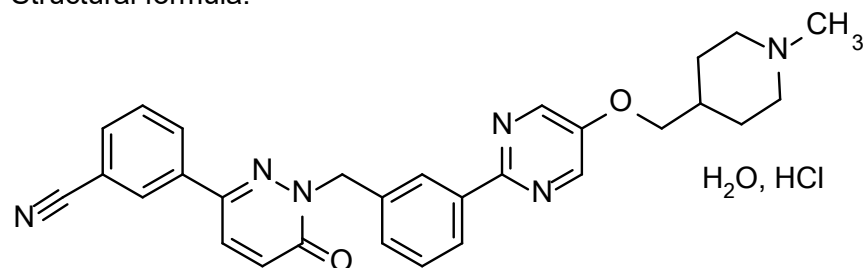
Drug Substance

Proper name/Common name: Tepotinib hydrochloride

Chemical name: 3-{1-[(3-{5-[(1-Methylpiperidin-4-yl)methoxy]pyrimidin-2-yl}phenyl)methyl]-6-oxo-1,6-dihydropyridazin-3-yl}benzonitrile hydrochloride monohydrate

Molecular formula and molecular mass: $C_{29}H_{28}N_6O_2 \cdot HCl \cdot H_2O$
547.05 g/mol (tepotinib hydrochloride monohydrate)
492.58 g/mol (tepotinib)

Structural formula:



Physicochemical properties: Tepotinib is a white to off-white powder. Tepotinib is non-hygroscopic. Tepotinib is slightly soluble in aqueous solvents at about pH 4.5 (without the presence of chloride ions). At pH 1.2 and pH 7.4, tepotinib is practically insoluble. In the presence of chloride ions, the solubility of tepotinib decreases. Tepotinib is practically insoluble in simulated gastric fluid.

Tepotinib hydrochloride has a pKa of 9.5.

14 CLINICAL TRIALS

14.1 Trial Design and Study Demographics

Table 7 Summary of Demographics for Patients in the VISION Study Efficacy Population with Advanced NSCLC Harboring *MET*ex14 Skipping Alterations

Study #	Trial design	Dosage, route of administration and duration	Study subjects (n)	Median age (Range)	Sex
VISION Study (MS2000 95-0022)	Single-arm, open-label Phase II trial	TEPMETKO 450 mg orally once daily, until progression of disease or unacceptable toxicity	N=313 (liquid biopsy, tumour biopsy, or both)	72 years (range 41 to 94)	Female: n = 159 (51%) Male: n = 154 (49%)

The efficacy of TEPMETKO (tepotinib) was evaluated in a single-arm, open-label, multicentre, non-randomized, multicohort study (VISION) in adult patients with locally advanced (stage IIIb) or metastatic (stage IV) non-small cell lung cancer (NSCLC) harbouring *MET*ex14 skipping alterations (n=313). Patients had at least one measurable lesion as defined by Response Evaluation Criteria in Solid Tumors (RECIST) version 1.1. Patients with epidermal growth factor receptor (*EGFR*) or anaplastic lymphoma kinase (*ALK*) activating alterations were excluded. Patients with symptomatic central nervous system metastases, clinically significant uncontrolled cardiac disease, or who received treatment with any MET or hepatocyte growth factor (HGF) inhibitor were excluded.

At baseline, 79% of patients were ≥ 65 years of age. Distribution by sex was balanced. The majority of patients were White (62%), followed by Asian patients (34%). Twenty-six per cent of patients had Eastern Cooperative Oncology Group (ECOG) Performance Status (PS) of 0 and 74% had ECOG PS of 1. Forty-nine percent were never smokers and 45% were former smokers.

The majority of patients had metastatic disease (94%), and 81% had adenocarcinoma histology. Patients were either treatment-naïve (n=164) or had received up to two lines of prior systemic therapies (n=149). Amongst previously treated patients, 84% received prior platinum-based chemotherapy. Thirteen percent of the patients had stable central nervous system metastases.

Identification of *MET*ex14 skipping alterations was prospectively determined using central laboratories employing either a polymerase chain reaction (PCR)-based or next-generation sequencing-based clinical trial assay using tissue (66%) and/or plasma (57%) samples.

Patients received 450 mg TEPMETKO once daily until disease progression or unacceptable toxicity.

The primary efficacy outcome measure was confirmed objective response (complete response or partial response) according to RECIST v1.1 as evaluated by a Blinded Independent Review Committee (BIRC). The confirmed objective response rate (ORR) was evaluated. A secondary efficacy outcome measure was duration of response (DOR) assessed by BIRC.

The efficacy population comprised 313 patients who tested positive for *MET*ex14 skipping alterations irrespective of testing methodology and had at least 9 months of follow-up from the start of TEPMETKO treatment (expected to yield 6 months of follow-up post response in patients with an objective response). Efficacy results are presented in Table 8.

14.2 Study Results

Table 8 Efficacy Results in the VISION Study by BIRC Assessment

Efficacy parameter	Efficacy population N=313
Objective response rate [95% CI]	51.4 [37.0, 53.6]
Complete response, %	0.3
Partial response, %	51.1
Median duration of response, months^{a, b} [95% CI]	18 [12.4, 46.4]
Duration of response	
≥ 6 months, % of responders	65.8
≥ 9 months, % of responders	49.7
≥ 12 months, % of responders	38.5

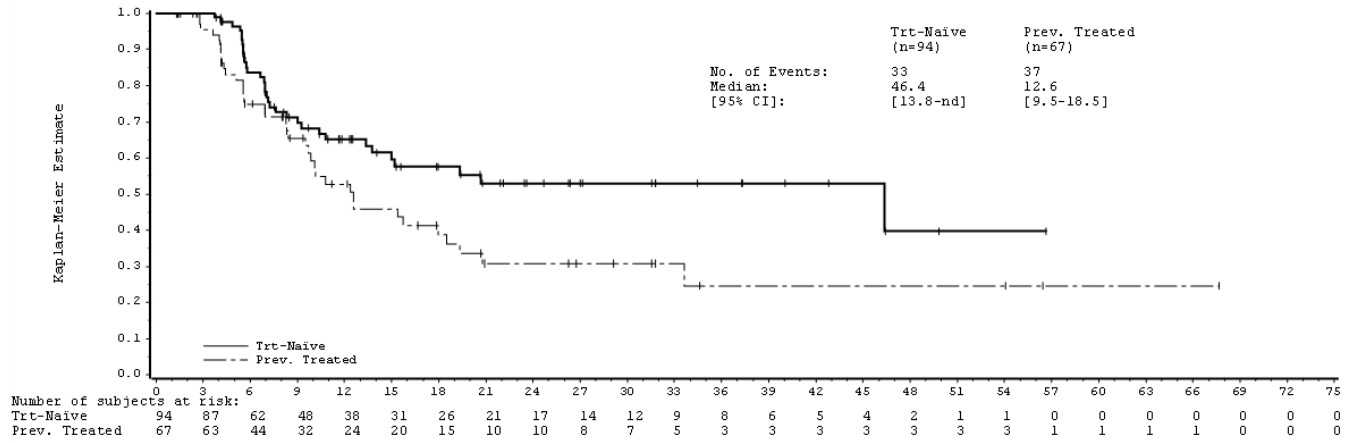
BIRC=Blinded Independent Review Committee, CI=confidence interval

a Product-limit (Kaplan-Meier) estimates, 95% CI for the median using the Brookmeyer and Crowley method

In treatment naïve patients (n=164) compared with previously treated patients (n=149), consistent results (BIRC) were observed for ORR (57.3% and 45%, respectively). In treatment naïve patients, median DOR was 46.4 months. However, in this subgroup, 61 responders (64.9%) were censored at the time of the analysis including 22 responders (23.2%) with ongoing treatment (see Figure 1). Median DOR was 12.6 months for the previously treated patients. In treatment naïve patients compared with previously treated patients, there were 66% and 65.7% responders, respectively, with DOR ≥ 6 months; 51.1% and 47.8%, respectively, with DOR ≥ 9 months; and 40.4% and 35.8%, respectively, with DOR ≥ 12 months.

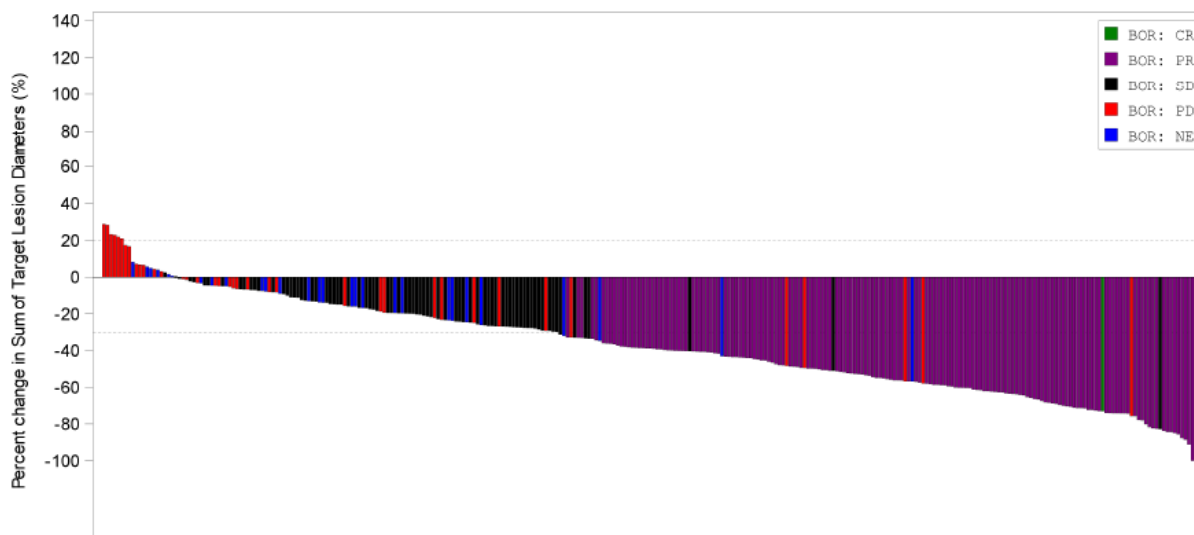
Figure 1

Kaplan-Meier Plot of DOR (Treatment-Naïve and Previously Treated Subgroups)



The tumour shrinkage pattern based on the change in sum of longest target lesion tumour diameters between baseline and best post-baseline assessment for each patient (BIRC) is shown in Figure 2.

Figure 2 Change in Sum of Longest Tumour Diameters Between Baseline and Best Post Baseline Assessment, IRC Assessment, VISION Study



BOR=best objective response, CR=complete response, NE=not evaluable, PD=progressive disease, PR=partial response, SD=stable disease.

8 subjects excluded due to baseline/on-treatment measurement not being available.

BOR: NE* - BOR of NE where ongoing patient has not had two post-baseline tumour assessments.

16 NON-CLINICAL TOXICOLOGY

General Toxicology

Oral repeat-dose toxicity studies have been conducted in rats up to 26 weeks and dogs up to 39 weeks.

A no-observed-adverse-effect-level (NOAEL) was established at 40.5 mg tepotinib per kg per day in the 26-week study in rats and at 9 mg tepotinib per kg per day in the 39-week study in dogs both equivalent to approximately 4% of the human exposure at the recommended dose of TEPMETKO 450 mg once daily based on AUC.

Carcinogenicity and Mutagenicity

No studies have been performed to evaluate the carcinogenic potential of tepotinib.

No mutagenic or genotoxic effects of tepotinib were observed in *in vitro* and *in vivo* studies. The major circulating metabolite was also shown to be non-mutagenic.

Reproductive and Developmental Toxicology

Impairment of Fertility

Fertility studies of tepotinib have not been performed. There were no morphological changes in male or female reproductive organs in repeat-dose toxicity studies in dogs.

Developmental Toxicity

In embryo-fetal development studies, pregnant rabbits received oral doses of 0.5, 5, 25, 50, 150 or 450 mg/kg mg tepotinib hydrochloride hydrate daily during organogenesis. Severe maternal toxicity occurred at the 450 mg/kg dose (approximately 0.75 times the human exposure at the 450 mg clinical dose). At 150 mg/kg (approximately 0.5 times the human exposure by AUC at the 450 mg clinical dose), two animals aborted and one animal died prematurely, mean fetal body weight was also decreased. A dose-dependent increase of skeletal malformations, including malrotations of fore and/or hind paws with concomitant misshapen scapula and/or malpositioned clavicle and/or calcaneus and/or talus occurred at doses \geq 5 mg/kg (approximately 0.003 times the human exposure by AUC at the 450 mg clinical dose).

Juvenile Animal Studies

No juvenile toxicity studies have been conducted.

PATIENT MEDICATION INFORMATION

READ THIS FOR SAFE AND EFFECTIVE USE OF YOUR MEDICINE

PrTEPMETKO®

Tepotinib Tablets

Read this carefully before you start taking **TEPMETKO** and each time you get a refill. This leaflet is a summary and will not tell you everything about this drug. Talk to your healthcare professional about your medical condition and treatment and ask if there is any new information about **TEPMETKO**.

Serious Warnings and Precautions

- TEPMETKO can cause serious side effects, including:
 - **Liver problems (increased liver enzymes):** Increased liver enzymes are very common with TEPMETKO. Liver problems may sometimes be serious and can lead to death. Your healthcare professional will run blood tests to check your liver before and during treatment.
 - **Interstitial lung disease / Pneumonitis:** TEPMETKO may cause inflammation or scarring of the lungs that can lead to death. Your healthcare professional will monitor you for lung problems. Tell your healthcare professional right away if you develop new or worsening symptoms of lung problems, including: trouble breathing, shortness of breath, cough, or fever. Symptoms may be similar to those from lung cancer.
- TEPMETKO can harm your unborn baby if you take it while you are pregnant.
- Only a doctor who has experience treating cancer should treat you with this drug.

What is TEPMETKO used for?

TEPMETKO is used to treat a type of lung cancer called non-small cell lung cancer (NSCLC). It is used in adults:

- whose cancer has spread to other parts of the body or is advanced and cannot be removed by surgery, and
- whose tumours have a change (abnormality) in the “MET” gene (known as the mesenchymal epithelial transition gene).

Your healthcare professional will perform a test to make sure that TEPMETKO is right for you.

How does TEPMETKO work?

TEPMETKO belongs to a group of cancer medicines called MET tyrosine kinase inhibitors. A change in the MET gene can produce a protein that causes cancer cells to grow. TEPMETKO works by blocking this protein. This may slow or stop the cancer from growing. It may also help

to shrink the cancer.

What are the ingredients in TEPMETKO?

Medicinal ingredient: tepotinib (as tepotinib hydrochloride)

Non-medicinal ingredients: colloidal silicon dioxide, crospovidone, hypromellose, lactose monohydrate, magnesium stearate, mannitol, microcrystalline cellulose, polyethylene glycol, red iron oxides (E172), titanium dioxide, triacetin.

TEPMETKO comes in the following dosage forms:

Tablets, 225 mg tepotinib (as tepotinib hydrochloride)

Do not use TEPMETKO if:

- you are allergic to tepotinib or any of the other ingredients of this medicine. Talk to your healthcare professional if you are not sure.

To help avoid side effects and ensure proper use, talk to your healthcare professional before you take TEPMETKO. Talk about any health conditions or problems you may have, including if you:

- have or have had problems with your kidney
- have or have had problems with your liver
- have an allergy to lactose. This is because TEPMETKO contains lactose.

Other warnings you should know about:

Pregnancy and breastfeeding:

Female patients:

- If you are pregnant, able to get pregnant or think you are pregnant, there are specific risks you should discuss with your healthcare professional.
- You should not take TEPMETKO if you are pregnant. It can harm your unborn baby.
- If you are able to become pregnant:
 - Your healthcare professional should do a pregnancy test before you start treatment with TEPMETKO.
 - Avoid becoming pregnant while you are taking TEPMETKO. Use effective birth control during treatment and for 1 week after your final dose of TEPMETKO. Talk to your healthcare professional about birth control methods that may be right for you during this time.
 - Tell your healthcare professional right away if you become pregnant or think you may be pregnant during treatment with TEPMETKO
- Do NOT breastfeed during treatment and for 1 week after your final dose of TEPMETKO. It is not known if TEPMETKO passes into your breast milk. Talk to your healthcare professional about the best way to feed your baby during this time.

Male patients with female partners who can become pregnant:

- You should not father a child while taking TEPMETKO. It may harm your unborn baby.
- Use condoms each time you have sex while taking TEPMETKO and for 1 week following your final dose.
- If your partner becomes pregnant while you are taking TEPMETKO, tell your healthcare professional right away.

Fertility:

It is unknown whether TEPMETKO may affect your fertility. No human studies on fertility have been performed. Talk to your healthcare professional if you have questions about this.

Driving and using machines:

Before you do tasks that require special attention, wait until you know how you respond to TEPMETKO.

Children and adolescents: TEPMETKO is NOT approved for use in children and adolescents under the age of 18 years.

Tell your healthcare professional about all the medicines you take, including any drugs, vitamins, minerals, natural supplements or alternative medicines.

The following may interact with TEPMETKO:

- Digoxin – used to treat heart conditions

How to take TEPMETKO:

- Take TEPMETKO exactly as your healthcare professional tells you to take it. Check with your doctor, pharmacist or nurse if you are not sure.
- Do NOT change your dose or stop taking it unless your healthcare professional tells you to.
- Take TEPMETKO 1 time a day with food.
- Take it at about the same time each day
- If your daily dose consists of more than one tablet, take both tablets together at the same time as a single dose.
- Swallow tablets whole. Do NOT chew, crush or split tablets.

Usual dose:**Usual adult dose:**

450 mg (two 225 mg tablets) by mouth once a day.

Your healthcare professional may change your dose, interrupt, or permanently stop treatment with TEPMETKO. This may happen if you develop certain side effects or if your disease gets worse.

Overdose:

If you think you, or a person you are caring for, have taken too much TEPMETKO, contact your healthcare professional, hospital emergency department or regional poison control centre immediately, even if there are no symptoms.

Missed Dose:

- If you miss a dose and it is more than 8 hours until your next dose, take the missed dose with food as soon as you remember. Continue with your next dose at your regular time.
- If it is within 8 hours of your next dose, skip the missed dose. Wait and take your next dose at your regular time. Do NOT take a double dose to make up for the missed dose.
- If you vomit after taking TEPMETKO, wait and take the next dose at your next scheduled time. Do not take an extra dose.

What are possible side effects from using TEPMETKO?

These are not all the possible side effects you may feel when taking TEPMETKO. If you experience any side effects not listed here, contact your healthcare professional.

- swelling of your face or other parts of your body
- fatigue, weakness, dizziness, headache
- nausea, vomiting
- diarrhea, constipation
- stomach pain
- decreased appetite
- muscle, bone or joint pain
- fever
- rash, itching
- shortness of breath

TEPMETKO can cause abnormal blood test results. Your healthcare professional will perform blood tests before and during your treatment. Your doctor will interpret the results.

Serious side effects and what to do about them			
Symptom / effect	Talk to your healthcare professional		Stop taking drug and get immediate medical help
	Only if severe	In all cases	
VERY COMMON			
Liver problems (increased liver enzymes): loss of appetite, nausea, vomiting, yellowing of your skin and/or the white part of your eyes (jaundice), dark “tea-coloured” urine, confusion, sleepiness, weakness, pain on the upper right side of stomach, swelling in your stomach area, light-coloured stools (bowel movements)		X	
Pleural effusion (fluid around the lungs): chest pain, difficult or painful breathing, cough		X	
Pneumonia (infection in the lungs): chest pain when you breath or cough, confusion, cough which may produce phlegm, fatigue, fever, sweating, severe shivering with chills, nausea, vomiting or diarrhea, shortness of breath		X	
COMMON			
Acute kidney injury (severe kidney problems): confusion; itchiness or rashes; puffiness in your face and hands; swelling in your feet or ankles; urinating less or not at all; weight gain		X	
Interstitial lung disease / Pneumonitis (inflammation or scarring of the lungs): new or worsening lung problems, including: trouble breathing, shortness of breath, cough, wheezing, fever		X	
Severe swelling, including generalized edema (swelling affecting the whole body)		X	

If you have a troublesome symptom or side effect that is not listed here or becomes bad enough to interfere with your daily activities, talk to your healthcare professional.

Reporting Side Effects

You can report any suspected side effects associated with the use of health products to Health Canada by:

- Visiting the Web page on Adverse Reaction Reporting (<https://www.canada.ca/en/health-canada/services/drugs-health-products/medeffect-canada/adverse-reaction-reporting.html>) for information on how to report online, by mail or by fax; or
- Calling toll-free at 1-866-234-2345.

NOTE: Contact your healthcare professional if you need information about how to manage your side effects. The Canada Vigilance Program does not provide medical advice.

Storage:

Store at room temperature between 15 to 30°C. Keep in the original package to protect from moisture.

Keep out of reach and sight of children.

If you want more information about TEPMETKO:

- Talk to your healthcare professional
- Find the full Product Monograph that is prepared for healthcare professionals and includes this Patient Medication Information by visiting the Health Canada website (<https://www.canada.ca/en/health-canada/services/drugs-health-products/drug-products/drug-product-database.html>) or the EMD Serono website (<http://www.emdserono.ca>).

This leaflet was prepared by EMD Serono, a Division of EMD Inc., Canada.

Last Revised:
MAR 4, 2024